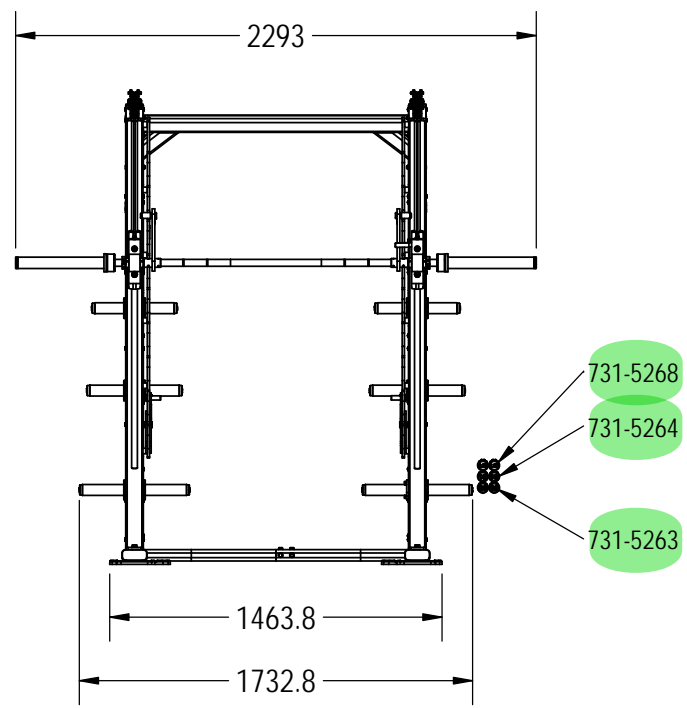
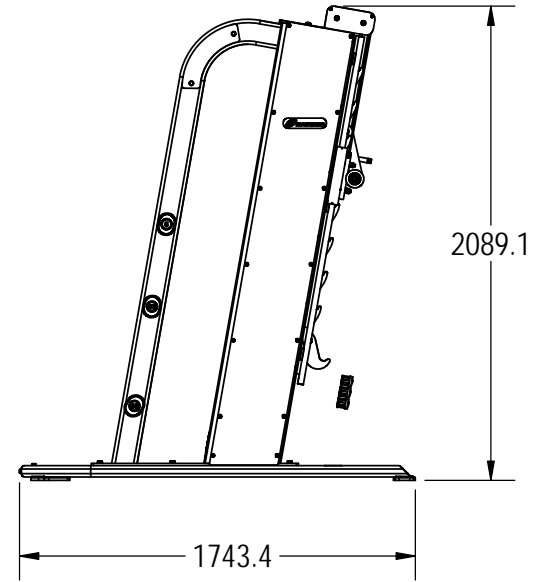
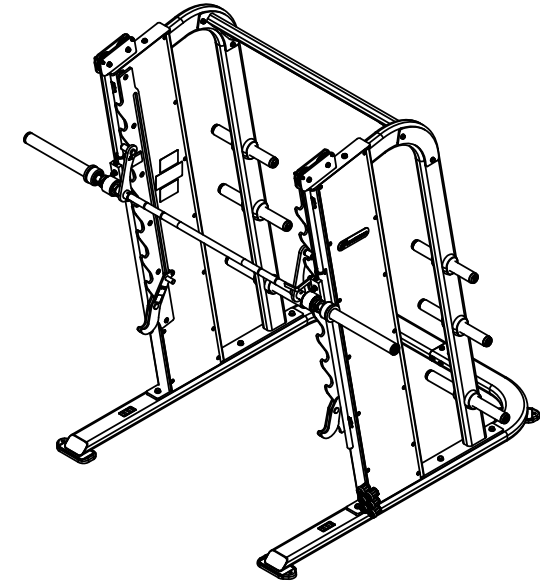
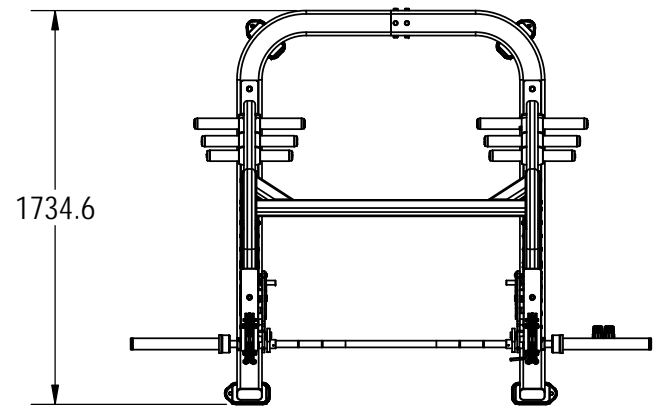


- NOTES:
- ASSEMBLE AND INSPECT PER SOP 620-7918..
  - INSTALL Kg STICKER AND AFFIX Lb STICKER TO INSIDE OF SHROUD WITH TAPE.
  - COLOR DICTATED BY THE SALES ORDER. REFERENCE THE MACHINES BOM FOR COMPONENTS CONTAINING -XX, -00XX AND -XXXXX.
    - COLOR: -XX COLOR DESIGNATOR AS SPECIFIED IN SOP 620-8222.
    - THE -XX CAN RESULT IN ONE COLOR FOR THE METAL SHROUD AND A DIFFERENT COLOR FOR THE METAL FRAME ALSO WITH A -XX LISTED ON THE BOM.
    - THE -00XX IS THE COLOR DESIGNATOR FOR UPHOLSTERY.
    - THE 5TH DESIGNATOR: "X" WITHIN -XXXXX DEFINES THE HEAD STRAP OR CUSTOM PRODUCTS BRAND. THIS IS SPECIFIED ON SALES ORDERS.
    - THE -XXXXX IS CREATED BY COMBINING THE -XX, -00XX AND THE 5TH DESIGNATOR.
    - ALL X'S SHOULD BE DEFINED ON THE SALES ORDER.

REVISION HISTORY				
REV	DATE	DESCRIPTION	ECO	BY
A	8/16/2016	INITIAL RELEASE	15497	AM
B	10/6/2016	REMOVED 731-2430; ADDED 731-7920	15570	ZDH



**DOCUMENT STATUS:**

NOTICE OF PROPRIETARY INFORMATION  
THIS DOCUMENT SHALL NOT BE REPRODUCED NOR SHALL THE INFORMATION CONTAINED HEREIN BE USED BY OR DISCLOSED TO OTHER EXCEPT AS EXPRESSLY AUTHORIZED BY CORE HEALTH & FITNESS, LLC.

CLASS OF WORK	UNLESS OTHERWISE SPECIFIED DIMS ARE IN mm. TOLERANCES FOR MEASURE OF LENGTH ARE:							ANGLES = ±2°		
	0.5 to 3	> 3 to 6	> 6 to 30	> 30 to 120	> 120 to 400	> 400 to 1000	> 1000 to 2000	> 2000		
FINE	±0.05	±0.05	±0.1	±0.15	±0.2	±0.3	±0.5	----		
MEDIUM	±0.1	±0.1	±0.2	±0.3	±0.5	±0.8	±1.2	±2		
COARSE	±0.2	±0.3	±0.5	±0.8	±1.2	±2	±3	±4		
VERY COARSE	----	±0.5	±1	±1.5	±2.5	±4	±6	±8		

**MATERIAL**  
SEE BOM

**FINISH**  
N/A

**VENDOR:** N/A

**P/N:**

THIRD ANGLE PROJECTION		
DRAWN	INITIAL AM	DATE 8/16/16
CHECKED		
APPROVED		
	U.O.M.	MM

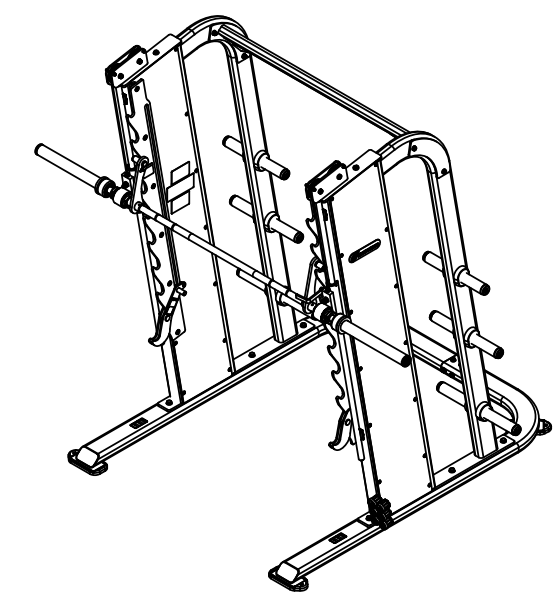
**CORE HEALTH & FITNESS, LLC**  
4400 NE 77th Ave., Suite 300  
Vancouver, WA 98662

CORE PART NO: NP-L8500-XXAAX  
REV: B

TITLE: SMITH MACHINE

SCALE: 1:33.3 | SHEET 1 OF 6 | SHEET SIZE: B

9		8		7		6		5		4		3		2		1	
	ITEM NO.	PART NUMBER	DESCRIPTION	Default/ QTY.		ITEM NO.	PART NUMBER	DESCRIPTION	Default/ QTY.								
J	1	050-5457	Label, S/N, Non-Powered, Primary, Core H&F	1		46	731-5478	HHBC,M10x45	7								J
	2	130-1778	COLLAR, 30MM ID	2		47	731-5479	M10, THIN NUT	4								I
	3	731-0335	STICKER, MADE IN CHINA, IP	1		48	731-5480	M12X1.5-C HEX NUT	2								H
I	4	731-0355	WASHER,PLAIN,M8,NARROW	7		49	731-5484	ROD,GUIDE,16MM,1970MM	2								G
	5	731-0363	NUT,M10X1.5,NYLOC	8		50	731-5485	ROD,GUIDE,25mm x 1524,THRD	2								F
	6	731-0365	NUT,M8 X 1.25,NYLOC JAM	12		51	731-5486	SLEEVE,INSERT,BUSHING,SMITH	4								E
	7	731-0512	STICKER,WARNING,PINCH	2		52	731-5487	WASHER,M10,BZ	2								D
	8	731-0517	STICKER, WARNING, BOLT DOWN	2		53	731-5491	M10x45 HHCS	2								C
H	9	731-1373	BUMPER,STOP,WGT	1		54	731-5492	Washer, M6, Ø6.6xØ12x1.6mm, CS, NKL	10								B
	10	731-1933	RIVET, PUSH TYPE	56		55	731-5493	M6 HEX NUT	6								A
	11	731-2428	STICKER,WARNING,SAFETY STOP,SMITH	1		56	731-5494	M6x30-N,HHBC	2								
	12	731-2429	STICKER,WARNING,SAFETY STOP,SMITH	2		57	731-5497	NUT,M12,CS,BZ	2								
	13	731-7920	STICKER,WARNING,NP STANDARD INSTRUCTIONS	2	ⓑ	58	731-5498	WASHER,PLAIN,M12,BZ	8								
	14	731-2434	BEARING, ROLLER 25MM, OPEN	4		59	731-5499	AXLE BOLT, M12x1.25	2								
G	15	731-2498	PIN,SPRING,M3 X 8mm	4		60	731-5501	ASSY,TUBE,GUIDE,BEARING,SMITH	2								
	16	731-2501	CABLE,SMITH MACHINE	2		61	731-5514	M12x30, HHM,HE,CS,ZP	6								
	17	731-2503	PULLEY,SMITH MACHINE	4		62	731-5515	M10-30, HHC,HK,CS,ZP	12								
	18	731-2647	FOOT,LONG,LEVERAGE	4		63	731-5516	SCREW,M10x1.5,75mm,HHC,HE,AS,12.9,ZC	6								
	19	731-5002	STICKER,WARNING,USE SPOTTER	2		64	731-5517	M8x8,HHS	2								
F	20	731-5003	STICKER,WARNING,PROPER PLACE	2		65	731-5518	M6x45, HHC,HK,CS,BO	4								
	21	731-5246	WELD, WGT HOLDER, 10LB	2		66	731-5519	Screw, M10x1.5, 45mm, HHC, CS, NKL, FT, Gr-8.8	4								
	22	731-5248	WELD, WGT HOLDER, 25LB	2		67	731-5520	WASHER,SMWC 8	17								
	23	731-5250	WELD, WGT HOLDER, 45LB	2		68	731-5521	SCREW,M8x1.25,75,HHC,HE,AS,12.9,ZP,PT	10								
	24	731-5251	PLATE, MOUNT, WGT HOLDER	6		69	731-5523	PLATE,STOP,ADJ,LH,SMITH	1								
E	25	731-5259	BUMPER,STOP,WGT	12		70	731-5524	PLATE,STOP,ADJ,RH,SMITH	1								
	26	731-5260	CAP,PLUG,WEIGHT HORN,45	2		71	731-5525	WELD,SAFETY CATCH,LH,SMITH	1								
	27	731-5261	CAP,PLUG,WEIGHT HORN,35	2		72	731-5526	WELD,SAFETY CATCH,RH,SMITH	1								
	28	731-5262	CAP,PLUG,WEIGHT HORN,25	2		73	731-5531	WELD,CB,SMITH	2								
	29	731-5263	CAP,PLUG,WEIGHT HORN,20	2		74	731-5541	COVER,OUTER,SMITH	2								
D	30	731-5264	CAP,PLUG,WEIGHT HORN,15	2		75	731-5542	STOP,OLY BAR,SMITH	1								
	31	731-5265	CAP,PLUG,WEIGHT HORN,10	2		76	731-5543	ASSY,MOUNT,OLY BAR,SMITH	2								
	32	731-5266	CAP,PLUG,WEIGHT HORN,5	2		77	731-5560	ASSY,OLY BAR,SMITH	1								
	33	731-5267	CAP,PLUG,WEIGHT HORN,2.5	2		78	731-5562	WASHER,SMWC 10	1								
C	34	731-5268	CAP,PLUG,WEIGHT HORN,1.25	2		79	731-5563	SCREW,M12-1.75,25MM,HHC,HE,CS	2								
	35	731-5451-XX	WELD,SIDE,LH,SMITH	1		80	731-5565	SCREW,M10x1.5,80,HHC,HE,AS,12.9,ZP,PT	4								
	36	731-5460-XX	WELD,SIDE,RH,SMITH	1		81	731-5568	BUSHING,IGUS,CW	4								
	37	731-5462-XX	WELD,BASE,LH,SMITH	1		82	731-7311	STICKER,NAUTILUS,DECO,45MMX191MM	2								
	38	731-5466-XX	WELD BASE,RH,SMITH	1													
B	39	731-5468	COVER,INNER, SMITH	2													
	40	731-5469	STAND-OFF,ROD,SMITH	6													
	41	731-5470	COLLAR,SET,16mm	2													
	42	731-5472	BUSHING,WEAR,HANDLE,SMITH	2													
	43	731-5473-XX	WELDMENT,CROSS-BAR,SMITH	1													
A	44	731-5475	PLATE,CROSSBAR,SMITH	2													
	45	731-5477	WASHER,M10	28													

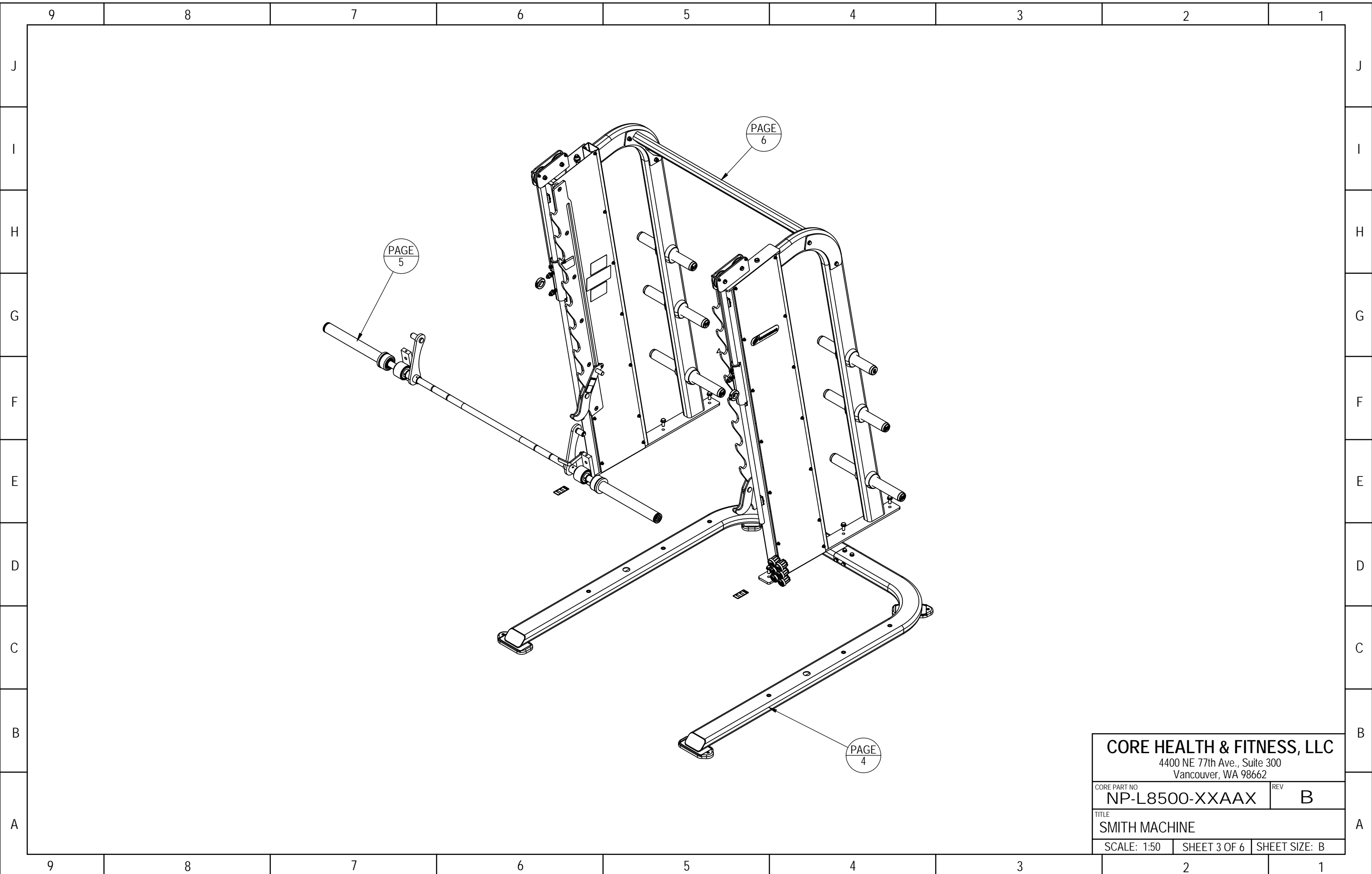


**CORE HEALTH & FITNESS, LLC**  
 4400 NE 77th Ave., Suite 300  
 Vancouver, WA 98662

CORE PART NO: NP-L8500-XXAAX      REV: B

TITLE: SMITH MACHINE

SCALE: 1:33.3      SHEET 2 OF 6      SHEET SIZE: B

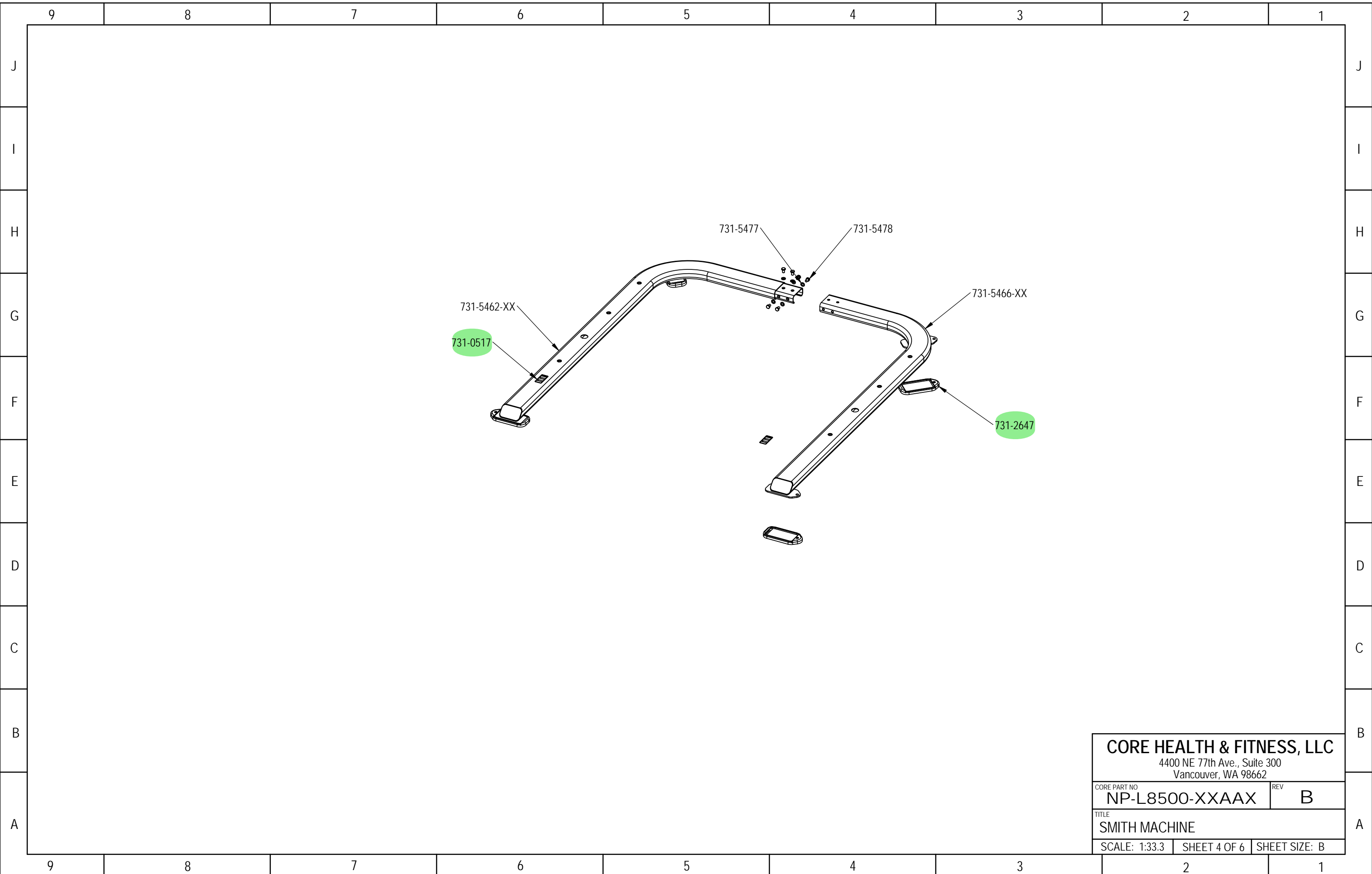


**CORE HEALTH & FITNESS, LLC**  
4400 NE 77th Ave., Suite 300  
Vancouver, WA 98662

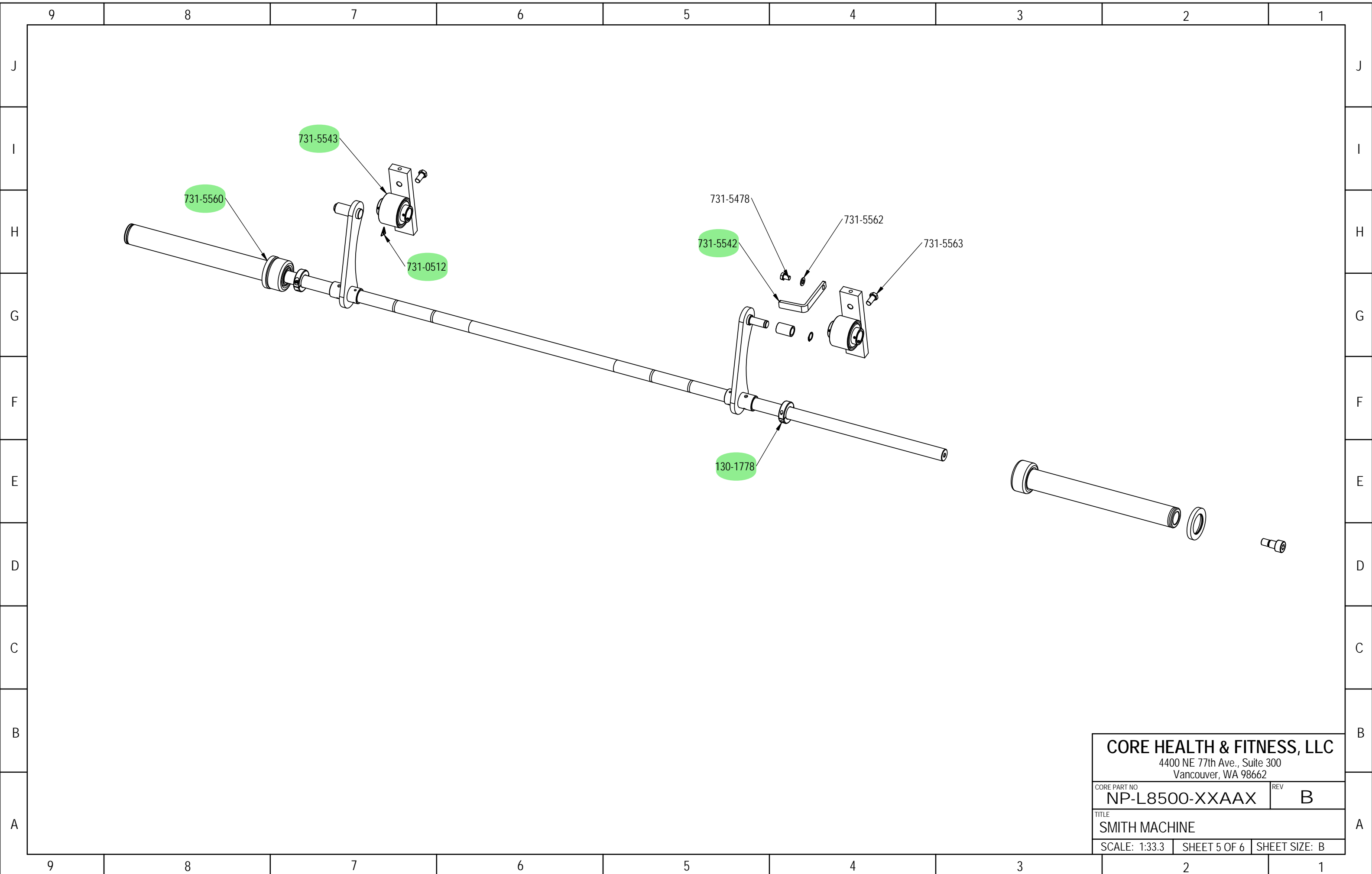
CORE PART NO	NP-L8500-XXAAX	REV	B
--------------	----------------	-----	---

TITLE	SMITH MACHINE		
-------	---------------	--	--

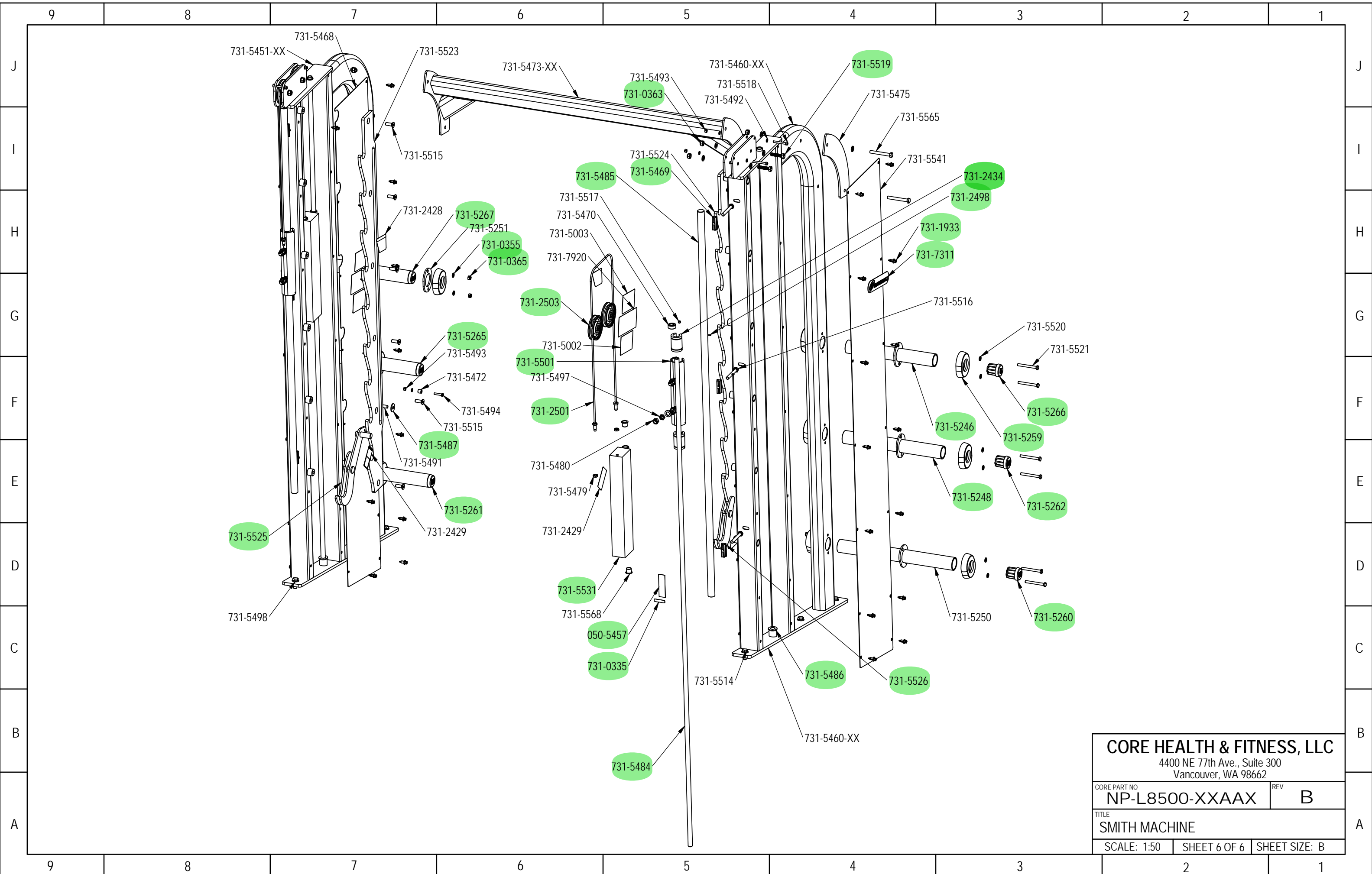
SCALE: 1:50	SHEET 3 OF 6	SHEET SIZE: B	
-------------	--------------	---------------	--



<b>CORE HEALTH &amp; FITNESS, LLC</b>		
4400 NE 77th Ave., Suite 300 Vancouver, WA 98662		
CORE PART NO	REV	
<b>NP-L8500-XXAAX</b>	<b>B</b>	
TITLE		
<b>SMITH MACHINE</b>		
SCALE: 1:33.3	SHEET 4 OF 6	SHEET SIZE: B



<b>CORE HEALTH &amp; FITNESS, LLC</b>		
4400 NE 77th Ave., Suite 300 Vancouver, WA 98662		
CORE PART NO	REV	
NP-L8500-XXAAX	B	
TITLE		
SMITH MACHINE		
SCALE: 1:33.3	SHEET 5 OF 6	SHEET SIZE: B



**CORE HEALTH & FITNESS, LLC**  
 4400 NE 77th Ave., Suite 300  
 Vancouver, WA 98662

CORE PART NO	REV
NP-L8500-XXAAX	B

TITLE  
**SMITH MACHINE**

SCALE: 1:50	SHEET 6 OF 6	SHEET SIZE: B
-------------	--------------	---------------